

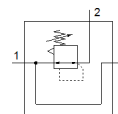
precision pressure regulator

MS6-LRPB-1/2-D5-A8

Part number: 534917

FESTO

indirectly controlled regulators, working pressure up to 4 bar.



Data sheet

Feature	Value
Size	6
Series	MS
Actuator lock	Rotary knob with lock
Assembly position	Any
Design structure	Piloted precision diaphragm regulator
Controller function	Output pressure constant with secondary exhaust
Pressure gauge	Prepared for G1/8
Operating pressure	1 ... 14 bar
Pressure regulation range	0.1 ... 4 bar
Max. pressure hysteresis	0.02 bar
Flow rate, secondary venting	>= 650 l/min
Standard nominal flow rate	>= 3,000 l/min
Operating medium	Compressed air in accordance with ISO8573-1:2010 [7:4:4] Inert gases
Note on operating and pilot medium	Lubricated operation not possible
Corrosion resistance classification CRC	2 - Moderate corrosion stress
Storage temperature	-10 ... 60 °C
Medium temperature	-10 ... 60 °C
Ambient temperature	-10 ... 60 °C
Product weight	1,000 g
Mounting type	Front panel installation Line installation with accessories Optional
Pneumatic connection, port 1	G1/2
Pneumatic connection, port 2	G1/2
Pneumatic connection, port 3	G1/4
Materials note	Free of copper and PTFE Conforms to RoHS
Material seals	NBR
Material housing	Aluminium